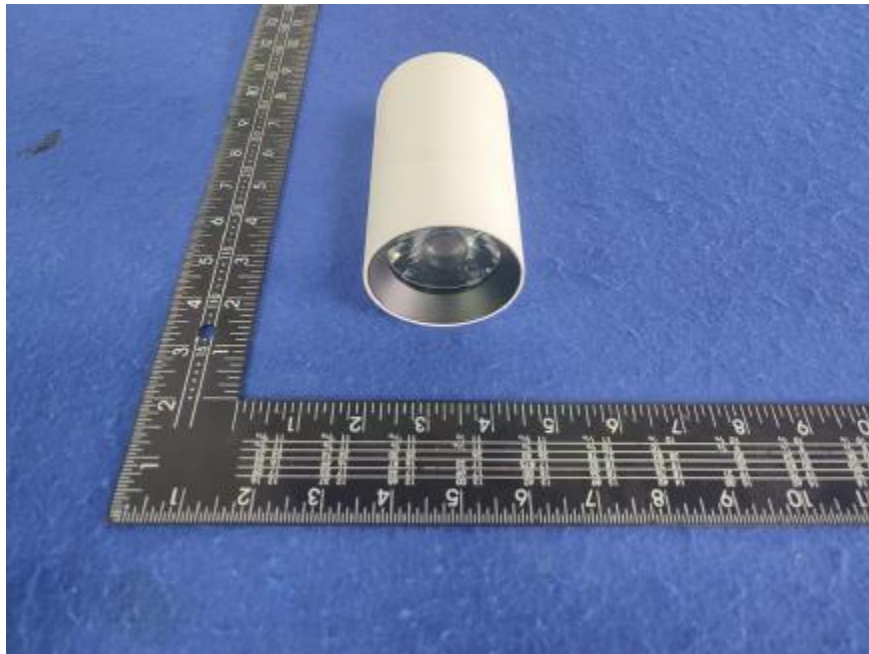


Luminaire Photograph



Light Output Ratio:	88.4%	
Luminaire Power:	14.59 W	
SHR Nominal:	0.75	Calculated using the TM5
SHR Maximum:	0.80	fine grid method.

C Range: 0 - 360DEG
C Interval: 30.0DEG
Test Speed: HIGH
Temperature: 25.3 °C
Operators: zoe
Test Date: 2025-1-9

Range: 0 - 180DEG
Interval: 1.0DEG
Test System: EVERFINE GO-SPEX500_V1 SYSTEM V2.00.461
Humidity: 65.0%
Test Distance: 3.160m [K=1.0000]
Remarks: LAMP: BXRE-30H1000-A-83 Ra: 95
LENS: PM-0132C 50R
NOT DRIVER: 48V
30minutes warm-up

LUMINOUS INTENSITY DISTRIBUTION DIAGRAM

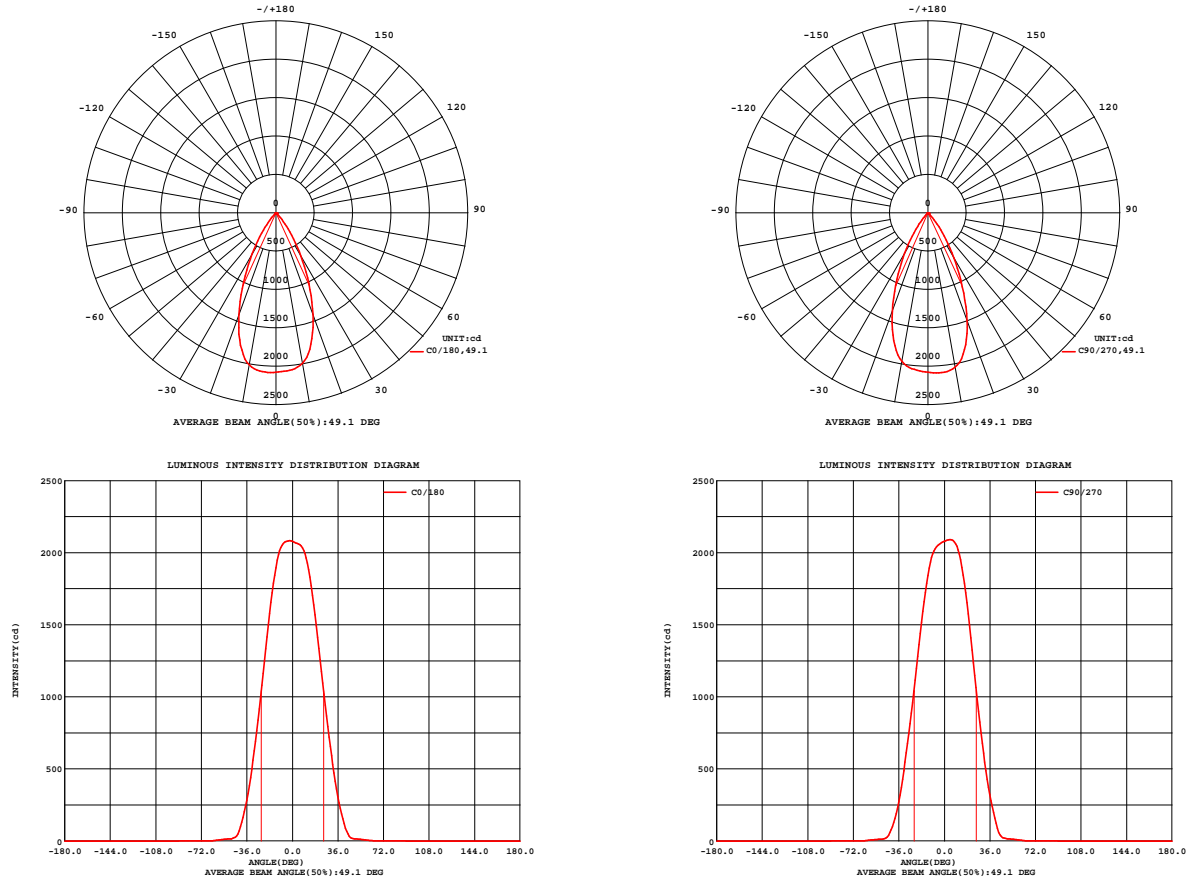


Fig. C0/C180

Fig. C90/C270

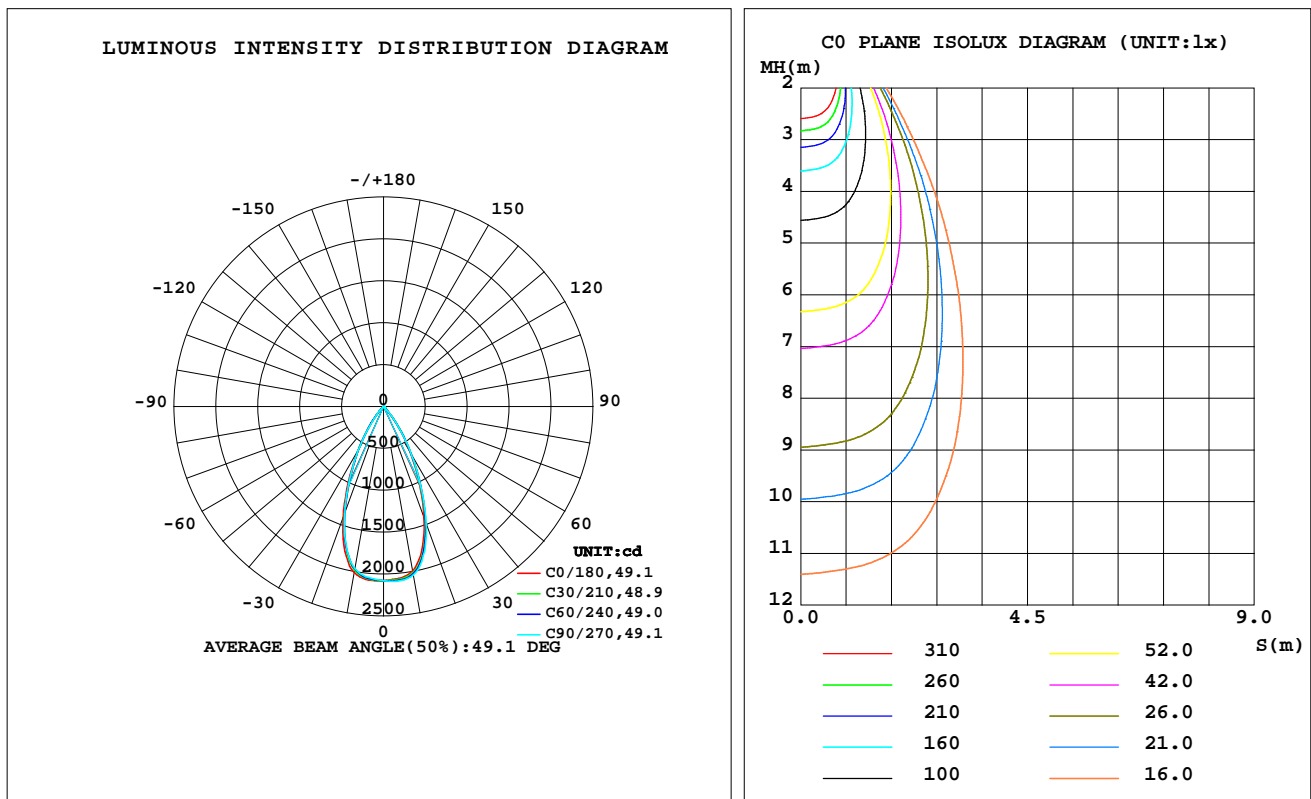
C Range: 0 - 360DEG
C Interval: 30.0DEG
Test Speed: HIGH
Temperature: 25.3 °C
Operators: zoe
Test Date: 2025-1-9

Range: 0 - 180DEG
Interval: 1.0DEG
Test System: EVERFINE GO-SPEX500_V1 SYSTEM V2.00.461
Humidity: 65.0%
Test Distance: 3.160m [K=1.0000]
Remarks: LAMP: BXRE-30H1000-A-83 Ra: 95
LENS: PM-0132C 50R
NOT DRIVER: 48V
30minutes warm-up

LUMINAIRE PHOTOMETRIC TEST REPORT

Test:U:47.997V I:0.3039A P:14.586W PF:1.0000 Freq:0Hz Lamp Flux:1597.41x1 lm		
NAME: OZ48-SB-64	TYPE:	WEIGHT:
SPEC.: 3000K	DIM.:	SERIAL No.: 2501090045
MFR.: RISE	SUR.: 0.002732585m2	Shielding Angle:

DATA OF LAMP		PHOTOMETRIC DATA Eff: 96.86 lm/W			
MODEL	Brideglux	Imax(cd)	2092	S/MH(C0/180)	0.76
NOMINAL POWER(W)	15	LOR(%)	88.4	S/MH(C90/270)	0.75
RATED VOLTAGE(V)	48	TOTAL FLUX(lm)	1412.8	UP,DN(C0-180)	0.0,45.5
NOMINAL FLUX(lm)	1597.41	CIE CLASS	DIRECT	UP,DN(C180-360)	0.0,43.0
LAMPS INSIDE	1	up(%)	0.0	CIBSE SHR NOM	0.75
TEST VOLTAGE(V)	48	down(%)	88.4	CIBSE SHR MAX	0.80



C Range: 0 - 360DEG
C Interval: 30.0DEG
Test Speed: HIGH
Temperature:25.3℃
Operators:zoe
Test Date:2025-1-9

Range: 0 - 180DEG
Interval: 1.0DEG
Test System:EVERFINE GO-SPEX500_V1 SYSTEM V2.00.461
Humidity:65.0%
Test Distance:3.160m [K=1.0000]
Remarks: LAMP:BXRE-30H1000-A-83 Ra:95
LENS:PM-0132C 50R
NOT DRIVER:48V
30minutes warm-up

ZONAL FLUX DIAGRAM

ZONAL FLUX DIAGRAM:

	C0	C45	C90	C135	C180	C225	C270	C315		zone	total	%lum,lamp
10	1993	2021	2043	2039	2013	1979	1966	1969	0- 10	195.6	195.6	13.8,12.2
20	1414	1464	1493	1458	1415	1360	1361	1384	10- 20	488.9	684.5	48.5,42.9
30	655.8	675.7	679.0	646.3	625.1	608.3	611.0	641.4	20- 30	458.9	1143	80.9,71.6
40	153.7	159.1	158.0	140.4	130.8	127.9	126.8	143.2	30- 40	222.1	1366	96.7,85.5
50	13.83	14.84	14.84	15.23	14.07	13.86	12.53	13.01	40- 50	35.62	1401	99.2,87.7
60	5.479	6.035	6.131	5.961	5.400	5.086	4.707	4.994	50- 60	9.245	1410	99.8,88.3
70	0.7269	0.9082	0.6686	0.7750	0.7732	0.7492	0.6151	0.5609	60- 70	2.032	1412	100,88.4
80	0.0493	0.0383	0.0430	0.0345	0.0425	0.0326	0.0404	0.0349	70- 80	0.2830	1413	100,88.4
90	0	0	0	0	0	0	0	0	80- 90	0.0319	1413	100,88.4
100	0	0	0	0	0	0	0	0	90-100	0	1413	100,88.4
110	0	0	0	0	0	0	0	0	100-110	0	1413	100,88.4
120	0	0	0	0	0	0	0	0	110-120	0	1413	100,88.4
130	0	0	0	0	0	0	0	0	120-130	0	1413	100,88.4
140	0	0	0	0	0	0	0	0	130-140	0	1413	100,88.4
150	0	0	0	0	0	0	0	0	140-150	0	1413	100,88.4
160	0	0	0	0	0	0	0	0	150-160	0	1413	100,88.4
170	0	0	0	0	0	0	0	0	160-170	0	1413	100,88.4
180	0	0	0	0	0	0	0	0	170-180	0	1413	100,88.4
DEG	LUMINOUS INTENSITY:cd									UNIT:lm		

C Range: 0 - 360DEG
C Interval: 30.0DEG
Test Speed: HIGH
Temperature:25.3℃
Operators:zoe
Test Date:2025-1-9

Range: 0 - 180DEG
Interval: 1.0DEG
Test System:EVERFINE GO-SPEX500_V1 SYSTEM V2.00.461
Humidity:65.0%
Test Distance:3.160m [K=1.0000]
Remarks: LAMP:BXRE-30H1000-A-83 Ra:95
LENS:PM-0132C 50R
NOT DRIVER:48V
30minutes warm-up

LUMINANCE LIMITATION CURVES

Test:U:47.997V I:0.3039A P:14.586W PF:1.0000 Freq:0Hz
Lamp Flux:1597.41x1 lm

NAME: OZ48-SB-64

TYPE:

WEIGHT:

SPEC.: 3000K

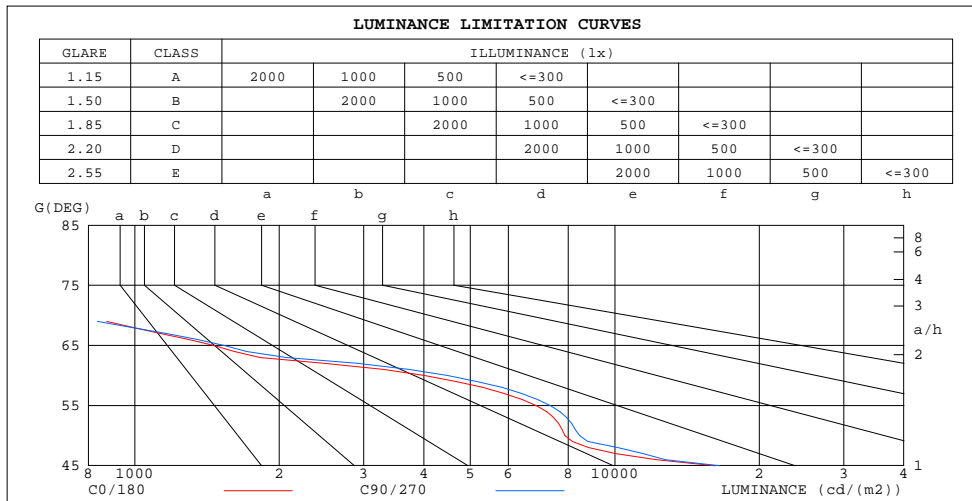
DIM.:

SERIAL No.: 2501090045

MFR.: RISE

SUR.: 0.002732585m2

Shielding Angle:



LUMINANCE cd/(m2)		
G(180)	C0/180	C90/270
85	164	143
80	104	91
75	199	273
70	778	715
65	1458	1533
60	4014	4486
55	6854	7333
50	7880	8448
45	16151	16548

C Range: 0 - 360DEG
C Interval: 30.0DEG
Test Speed: HIGH
Temperature:25.3℃
Operators:zoe
Test Date:2025-1-9

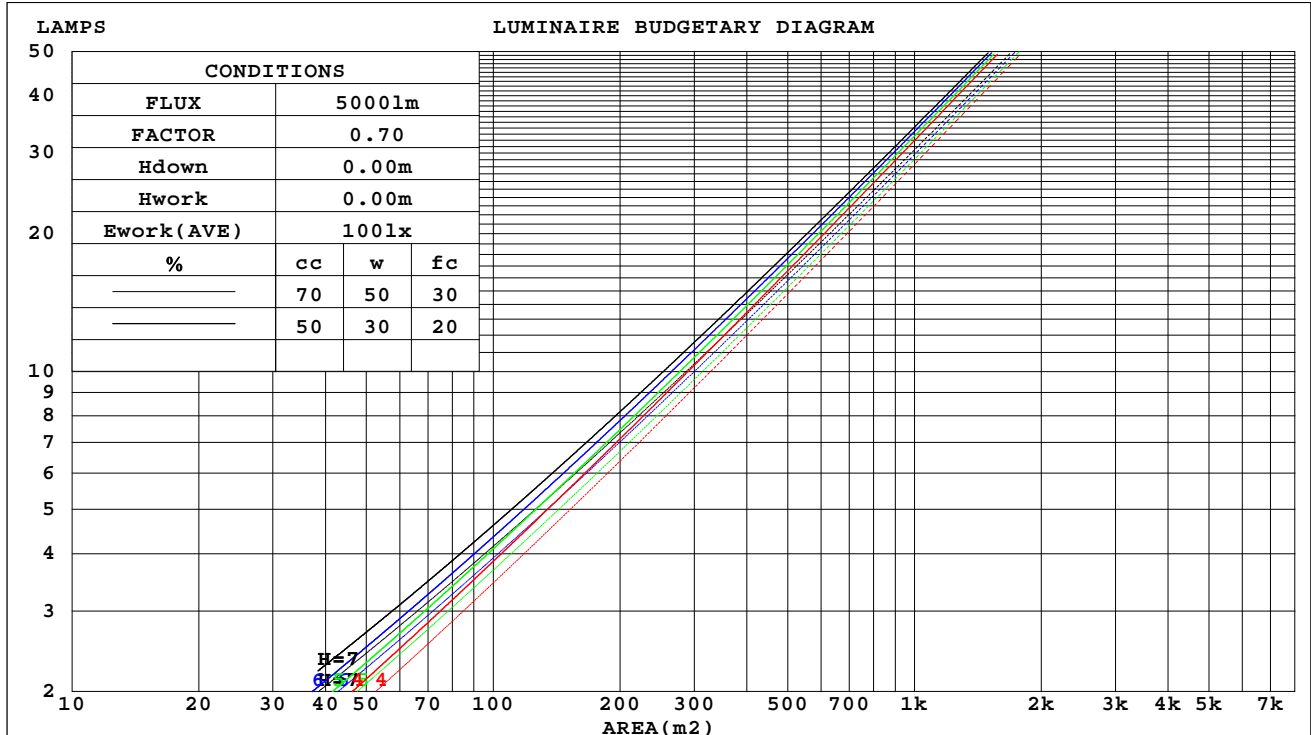
Range: 0 - 180DEG
Interval: 1.0DEG
Test System:EVERFINE GO-SPEX500_V1 SYSTEM V2.00.461
Humidity:65.0%
Test Distance:3.160m [K=1.0000]
Remarks: LAMP:BXRE-30H1000-A-83 Ra:95
LENS:PM-0132C 50R
NOT DRIVER:48V
30minutes warm-up

CU AND LUMINAIRE BUDGETARY ESTIMATE DIAGRAM

Test:U:47.997V I:0.3039A P:14.586W PF:1.0000 Freq:0Hz
Lamp Flux:1597.41lx1 lm

NAME: OZ48-SB-64	TYPE:	WEIGHT:
SPEC.: 3000K	DIM.:	SERIAL No.: 2501090045
MFR.: RISE	SUR.: 0.002732585m2	Shielding Angle:

cc	80%			70%			50%			30%			10%			0
w	50%	30%	10%	50%	30%	10%	50%	30%	10%	50%	30%	10%	50%	30%	10%	0
fc	20%			20%			20%			20%			20%			0
RCR	RCR:Room Cavity Ratio															



C Range: 0 - 360DEG
C Interval: 30.0DEG
Test Speed: HIGH
Temperature:25.3℃
Operators:zoe
Test Date:2025-1-9

Range: 0 - 180DEG
Interval: 1.0DEG
Test System:EVERFINE GO-SPEX500_V1 SYSTEM V2.00.461
Humidity:65.0%
Test Distance:3.160m [K=1.0000]
Remarks: LAMP:BXRE-30H1000-A-83 Ra:95
LENS:PM-0132C 50R
NOT DRIVER:48V
30minutes warm-up

WEC AND CCEC

Test:U:47.997V I:0.3039A P:14.586W PF:1.0000 Freq:0Hz Lamp Flux:1597.4lx1 lm		
NAME: OZ48-SB-64	TYPE:	WEIGHT:
SPEC.: 3000K	DIM.:	SERIAL No.: 2501090045
MFR.: RISE	SUR.: 0.002732585m2	Shielding Angle:

cc	80%			70%			50%			30%			10%			0	
w	50%	30%	10%	50%	30%	10%	50%	30%	10%	50%	30%	10%	50%	30%	10%	0	
fc	20%			20%			20%			20%			20%			0	
RCR	RCR:Room Cavity Ratio						Wall Exitance Coefficients(WEC)										
0.0																	
1.0	.147	.083	.026	.141	.080	.025	.130	.074	.024	.119	.069	.022	.110	.064	.021		
2.0	.139	.076	.023	.135	.074	.023	.125	.070	.022	.117	.065	.020	.109	.062	.019		
3.0	.133	.071	.021	.128	.069	.021	.120	.065	.020	.113	.062	.019	.106	.059	.018		
4.0	.126	.066	.019	.122	.064	.019	.116	.061	.018	.109	.059	.018	.104	.056	.017		
5.0	.120	.061	.018	.117	.060	.018	.111	.058	.017	.106	.056	.017	.101	.054	.016		
6.0	.115	.058	.016	.112	.057	.016	.107	.055	.016	.102	.053	.016	.098	.051	.015		
7.0	.110	.054	.015	.107	.054	.015	.103	.052	.015	.099	.051	.015	.095	.049	.014		
8.0	.105	.051	.014	.103	.051	.014	.099	.050	.014	.095	.048	.014	.092	.047	.014		
9.0	.101	.049	.014	.099	.048	.014	.096	.047	.013	.092	.046	.013	.089	.045	.013		
10.0	.097	.047	.013	.095	.046	.013	.092	.045	.013	.089	.044	.013	.086	.043	.012		

cc	80%			70%			50%			30%			10%			0
w	50%	30%	10%	50%	30%	10%	50%	30%	10%	50%	30%	10%	50%	30%	10%	0
fc	20%			20%			20%			20%			20%			0
RcR	RcR:Room Cavity Ratio			Ceiling Cavity Exitance Coefficients(CCEC)												
0.0	.168	.168	.168	.144	.144	.144	.098	.098	.098	.056	.056	.056	.018	.018	.018	
1.0	.151	.139	.129	.129	.119	.111	.088	.082	.077	.051	.048	.045	.016	.015	.014	
2.0	.137	.117	.101	.117	.101	.087	.080	.070	.061	.046	.041	.036	.015	.013	.012	
3.0	.125	.100	.081	.107	.087	.070	.074	.060	.049	.042	.035	.029	.014	.011	.009	
4.0	.115	.087	.066	.099	.075	.057	.068	.053	.040	.039	.031	.024	.013	.010	.008	
5.0	.107	.077	.054	.092	.066	.047	.064	.046	.033	.037	.027	.020	.012	.009	.007	
6.0	.101	.068	.045	.087	.059	.039	.060	.041	.028	.035	.024	.017	.011	.008	.005	
7.0	.095	.062	.038	.082	.053	.033	.056	.037	.024	.033	.022	.014	.011	.007	.005	
8.0	.090	.056	.033	.077	.049	.029	.053	.034	.020	.031	.020	.012	.010	.007	.004	
9.0	.085	.051	.029	.073	.045	.025	.051	.031	.018	.030	.019	.011	.010	.006	.003	
10.0	.081	.047	.025	.070	.041	.022	.049	.029	.015	.028	.017	.009	.009	.006	.003	

C Range: 0 - 360DEG
C Interval: 30.0DEG
Test Speed: HIGH
Temperature:25.3℃
Operators:zoe
Test Date:2025-1-9

Range: 0 - 180DEG
Interval: 1.0DEG
Test System:EVERFINE GO-SPEX500_V1 SYSTEM V2.00.461
Humidity:65.0%
Test Distance:3.160m [K=1.0000]
Remarks: LAMP:BXRE-30H1000-A-83 Ra:95
LENS:PM-0132C 50R
NOT DRIVER:48V
30minutes warm-up

UGR(Unified Glare Rating) Table

Test:U:47.997V I:0.3039A P:14.586W PF:1.0000 Freq:0Hz Lamp Flux:1597.4lx1 lm										
NAME: OZ48-SB-64					TYPE:			WEIGHT:		
SPEC.: 3000K					DIM.:			SERIAL No.: 2501090045		
MFR.: RISE					SUR.: 0.002732585m2			Shielding Angle:		
ceiling/cavity	0.7	0.7	0.5	0.5	0.3	0.7	0.7	0.5	0.5	0.3
walls	0.5	0.3	0.5	0.3	0.3	0.5	0.3	0.5	0.3	0.3
working plane	0.2	0.2	0.2	0.2	0.2	0.2	0.2	0.2	0.2	0.2
Room dimensions	Viewed crosswise					Viewed endwise				
x = 2H y = 2H	18.6	19.5	18.8	19.6	19.8	18.7	19.5	18.9	19.7	19.9
3H	18.4	19.2	18.7	19.4	19.6	18.5	19.3	18.8	19.5	19.7
4H	18.4	19.1	18.6	19.3	19.6	18.4	19.2	18.7	19.4	19.6
6H	18.3	19.0	18.6	19.2	19.5	18.3	19.0	18.6	19.3	19.5
8H	18.2	18.9	18.5	19.2	19.4	18.3	19.0	18.6	19.2	19.5
12H	18.2	18.8	18.5	19.1	19.4	18.2	18.9	18.6	19.2	19.4
4H 2H	18.4	19.1	18.6	19.3	19.6	18.4	19.2	18.7	19.4	19.6
3H	18.2	18.8	18.5	19.1	19.4	18.2	18.9	18.6	19.2	19.4
4H	18.1	18.7	18.4	19.0	19.3	18.2	18.7	18.5	19.0	19.3
6H	18.0	18.5	18.4	18.9	19.2	18.1	18.6	18.4	18.9	19.3
8H	17.9	18.4	18.3	18.8	19.1	18.0	18.5	18.4	18.8	19.2
12H	17.9	18.3	18.3	18.7	19.1	18.0	18.4	18.4	18.8	19.2
8H 4H	17.9	18.4	18.3	18.8	19.1	18.0	18.5	18.4	18.8	19.2
6H	17.8	18.2	18.3	18.6	19.0	17.9	18.3	18.3	18.7	19.1
8H	17.8	18.1	18.2	18.6	19.0	17.8	18.2	18.3	18.6	19.0
12H	17.7	18.0	18.2	18.5	18.9	17.8	18.1	18.3	18.5	19.0
12H 4H	17.9	18.3	18.3	18.7	19.1	18.0	18.4	18.4	18.8	19.2
6H	17.8	18.1	18.2	18.6	19.0	17.8	18.2	18.3	18.6	19.0
8H	17.7	18.0	18.2	18.5	18.9	17.8	18.1	18.3	18.5	19.0
Variations with the observer position at spacings(CIE Pub.117):										
S = 1.0H	+ 3.6 / -12.6					+ 3.8 / -12.3				
1.5H	+ 6.2 / -10.1					+ 6.4 / - 9.7				
2.0H	+ 4.7 / - 7.6					+ 4.7 / - 7.4				

CIE Pub.117, 1597 lm Total Lamp Luminous Flux Correct (8log(F/F0) = 1.6)
Area: 0.00273258 m2

C Range: 0 - 360DEG
C Interval: 30.0DEG
Test Speed: HIGH
Temperature:25.3℃
Operators:zoe
Test Date:2025-1-9

Range: 0 - 180DEG
Interval: 1.0DEG
Test System:EVERFINE GO-SPEX500_V1 SYSTEM V2.00.461
Humidity:65.0%
Test Distance:3.160m [K=1.0000]
Remarks: LAMP:BXRE-30H1000-A-83 Ra:95
LENS:PM-0132C 50R
NOT DRIVER:48V
30minutes warm-up

UTILIZATION FACTORS TABLE

Test:U:47.997V I:0.3039A P:14.586W PF:1.0000 Freq:0Hz Lamp Flux:1597.4lx1 lm		
NAME: OZ48-SB-64	TYPE:	WEIGHT:
SPEC.: 3000K	DIM.:	SERIAL No.: 2501090045
MFR.: RISE	SUR.: 0.002732585m2	Shielding Angle:

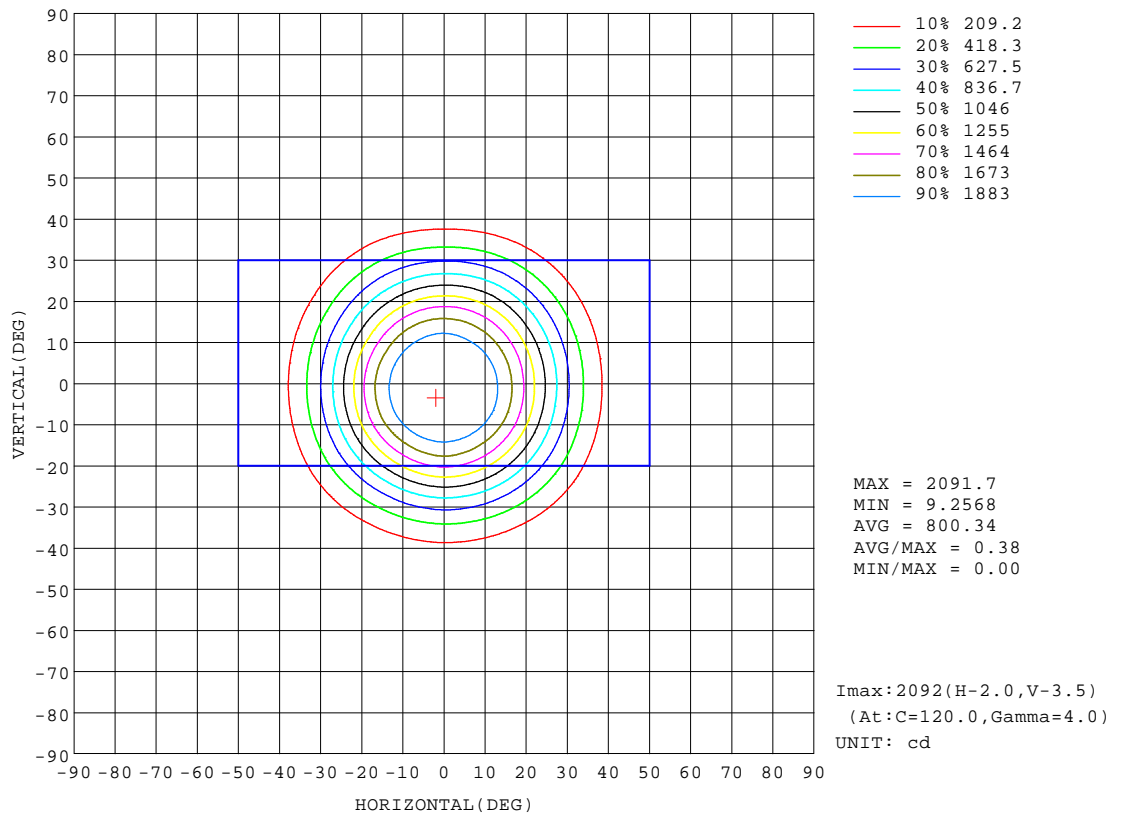
REFLECTANCE										
Ceiling	0.8	0.8	0.8	0.7	0.7	0.7	0.5	0.5	0.5	0
Walls	0.7	0.5	0.3	0.7	0.5	0.3	0.7	0.5	0.3	0
Working plane	0.2	0.2	0.2	0.2	0.2	0.2	0.2	0.2	0.2	0
ROOM INDEX	UTILIZATION FACTORS(PERCENT) $k(RI) \times RCR = 5$									
k = 0.60	79	74	71	79	74	71	78	73	70	68
0.80	85	81	78	85	80	77	84	80	77	74
1.00	89	84	81	88	84	81	87	84	81	77
1.25	92	88	85	91	88	85	90	87	84	81
1.50	95	91	88	94	90	88	92	89	87	83
2.00	97	93	91	96	92	90	93	91	89	84
2.50	98	95	92	97	94	92	94	92	90	85
3.00	99	97	94	98	95	93	95	93	91	86
4.00	101	99	97	99	97	96	96	95	93	87
5.00	102	100	99	100	99	97	97	96	95	88
ROOM INDEX	UF(total)									Direct
According to DIN EN 13032-2 2004			Suspended					SHRNOM = 1.25		

C Range: 0 - 360DEG
C Interval: 30.0DEG
Test Speed: HIGH
Temperature:25.3℃
Operators:zoe
Test Date:2025-1-9

Range: 0 - 180DEG
Interval: 1.0DEG
Test System:EVERFINE GO-SPEX500_V1 SYSTEM V2.00.461
Humidity:65.0%
Test Distance:3.160m [K=1.0000]
Remarks: LAMP:BXRE-30H1000-A-83 Ra:95
LENS:PM-0132C 50R
NOT DRIVER:48V
30minutes warm-up

ISOCANDELA DIAGRAM

Test:U:47.997V I:0.3039A P:14.586W PF:1.0000 Freq:0Hz Lamp Flux:1597.4lx1 lm		
NAME: OZ48-SB-64	TYPE:	WEIGHT:
SPEC.: 3000K	DIM.:	SERIAL No.: 2501090045
MFR.: RISE	SUR.: 0.002732585m2	Shielding Angle:

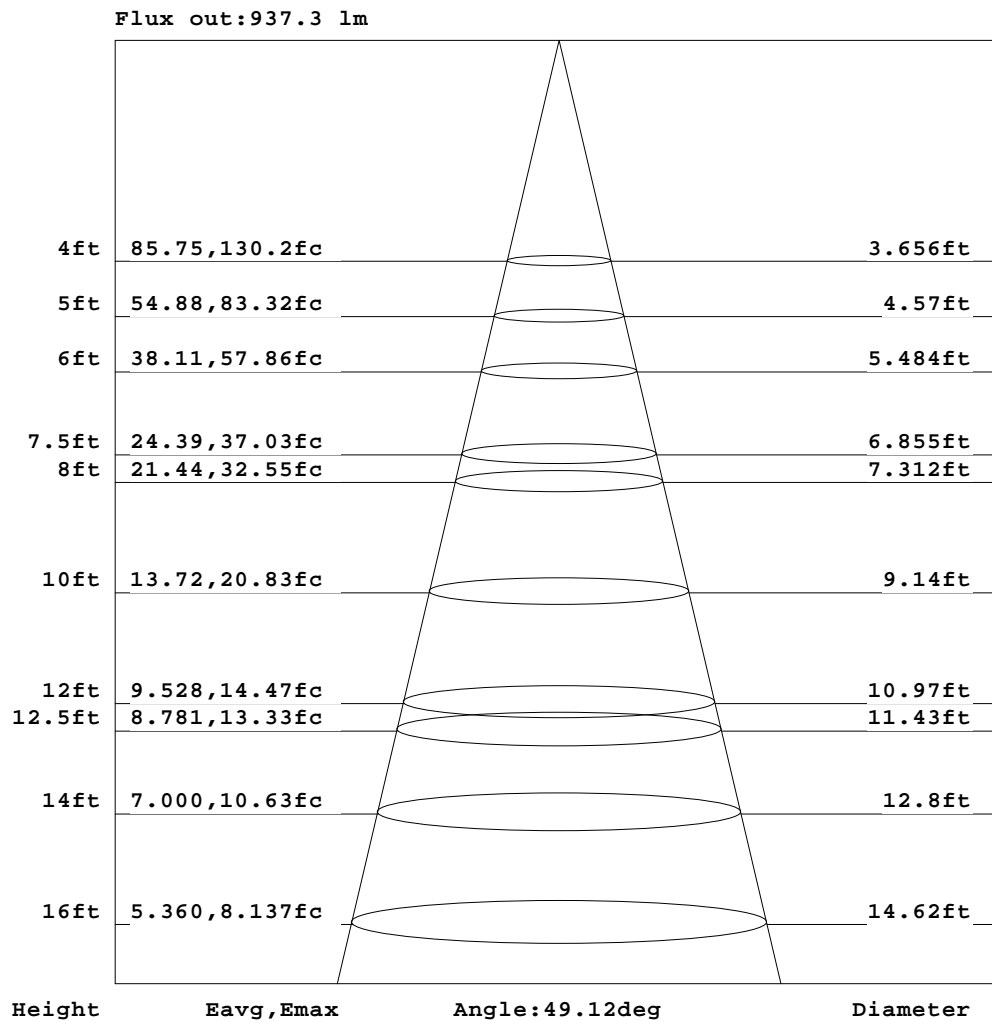


C Range: 0 - 360DEG
C Interval: 30.0DEG
Test Speed: HIGH
Temperature: 25.3 °C
Operators: zoe
Test Date: 2025-1-9

Range: 0 - 180DEG
Interval: 1.0DEG
Test System: EVERFINE GO-SPEX500_V1 SYSTEM V2.00.461
Humidity: 65.0%
Test Distance: 3.160m [K=1.0000]
Remarks: LAMP: BXRE-30H1000-A-83 Ra: 95
LENS: PM-0132C 50R
NOT DRIVER: 48V
30minutes warm-up

AAI Figure

Test:U:47.997V I:0.3039A P:14.586W PF:1.0000 Freq:0Hz Lamp Flux:1597.4lx1 lm		
NAME: OZ48-SB-64	TYPE:	WEIGHT:
SPEC.: 3000K	DIM.:	SERIAL No.: 2501090045
MFR.: RISE	SUR.: 0.002732585m2	Shielding Angle:



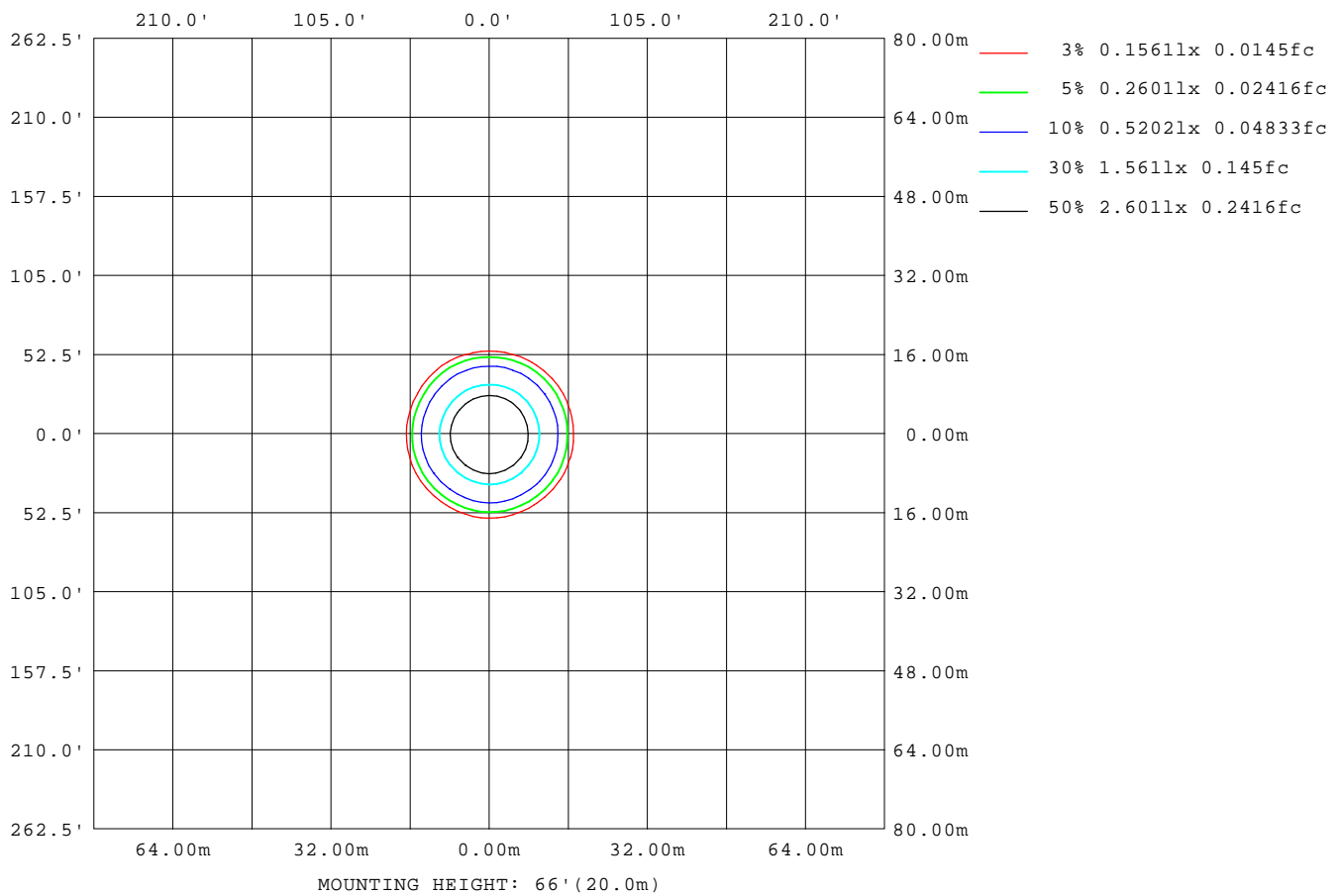
Note: The Curves indicate the illuminated area and the average illumination when the luminaire is at different distance.

C Range: 0 - 360DEG
C Interval: 30.0DEG
Test Speed: HIGH
Temperature: 25.3 °C
Operators: zoe
Test Date: 2025-1-9

Range: 0 - 180DEG
Interval: 1.0DEG
Test System: EVERFINE GO-SPEX500_V1 SYSTEM V2.00.461
Humidity: 65.0%
Test Distance: 3.160m [K=1.0000]
Remarks: LAMP: BXRE-30H1000-A-83 Ra: 95
LENS: PM-0132C 50R
NOT DRIVER: 48V
30minutes warm-up

ISOLUX DIAGRAM

Test:U:47.997V I:0.3039A P:14.586W PF:1.0000 Freq:0Hz Lamp Flux:1597.4lx1 lm		
NAME: OZ48-SB-64	TYPE:	WEIGHT:
SPEC.: 3000K	DIM.:	SERIAL No.: 2501090045
MFR.: RISE	SUR.: 0.002732585m2	Shielding Angle:



C Range: 0 - 360DEG
C Interval: 30.0DEG
Test Speed: HIGH
Temperature:25.3℃
Operators:zoe
Test Date:2025-1-9

Range: 0 - 180DEG
Interval: 1.0DEG
Test System:EVERFINE GO-SPEX500_V1 SYSTEM V2.00.461
Humidity:65.0%
Test Distance:3.160m [K=1.0000]
Remarks: LAMP:BXRE-30H1000-A-83 Ra:95
LENS:PM-0132C 50R
NOT DRIVER:48V
30minutes warm-up

LED Avg.L Report

Test:U:47.997V I:0.3039A P:14.586W PF:1.0000 Freq:0Hz Lamp Flux:1597.41x1 lm		
NAME: OZ48-SB-64	TYPE:	WEIGHT:
SPEC.: 3000K	DIM.:	SERIAL No.: 2501090045
MFR.: RISE	SUR.: 0.002732585m2	Shielding Angle:

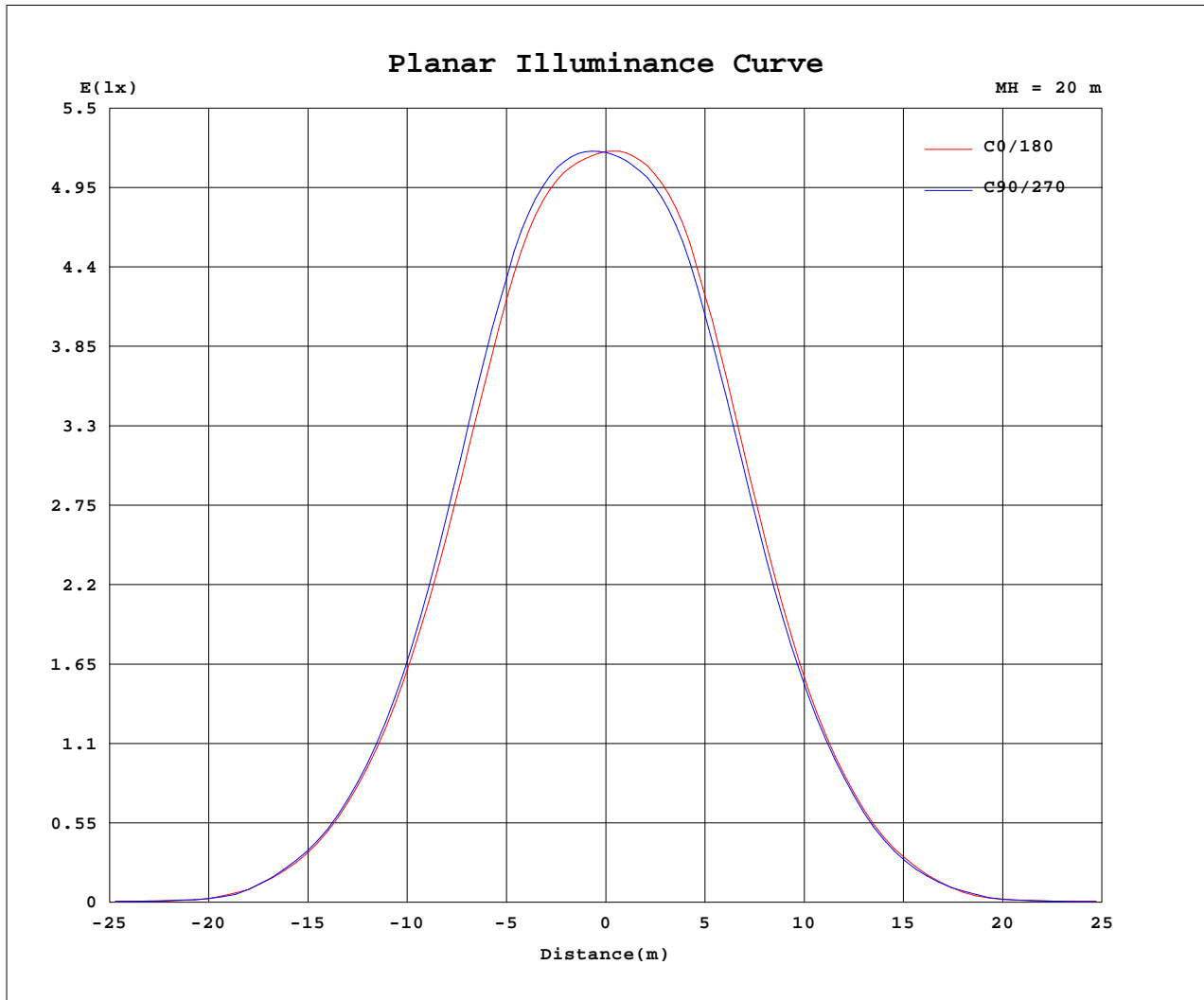
AvgL	cd/m2
L_0~180(65)av	1410
L_0~180(75)av	171
L_0~180(85)av	157
L_90~270(65)av	1324
L_90~270(75)av	210
L_90~270(85)av	147
L_45(65)av	1437
L_45(75)av	192
L_45(85)av	109

Standard: GB/T 29293-2012

C Range: 0 - 360DEG
C Interval: 30.0DEG
Test Speed: HIGH
Temperature:25.3℃
Operators:zoe
Test Date:2025-1-9

Range: 0 - 180DEG
Interval: 1.0DEG
Test System:EVERFINE GO-SPEX500_V1 SYSTEM V2.00.461
Humidity:65.0%
Test Distance:3.160m [K=1.0000]
Remarks: LAMP:BXRE-30H1000-A-83 Ra:95
LENS:PM-0132C 50R
NOT DRIVER:48V
30minutes warm-up

Planar Illuminance Curve



C Range: 0 - 360DEG
 C Interval: 30.0DEG
 Test Speed: HIGH
 Temperature: 25.3 °C
 Operators: zoe
 Test Date: 2025-1-9

Range: 0 - 180DEG
 Interval: 1.0DEG
 Test System: EVERFINE GO-SPEX500_V1 SYSTEM V2.00.461
 Humidity: 65.0%
 Test Distance: 3.160m [K=1.0000]
 Remarks: LAMP: BXRE-30H1000-A-83 Ra: 95
 LENS: PM-0132C 50R
 NOT DRIVER: 48V
 30minutes warm-up



LUMINOUS DISTRIBUTION INTENSITY DATA

Test:U:47.997V I:0.3039A P:14.586W PF:1.0000 Freq:0Hz Lamp Flux:1597.41x1 lm		
NAME: OZ48-SB-64	TYPE:	WEIGHT:
SPEC.: 3000K	DIM.:	SERIAL No.: 2501090045
MFR.: RISE	SUR.: 0.002732585m2	Shielding Angle:

Table--1

UNIT: cd

C(DEG) (DEG)	0	30	60	90	120	150	180	210	240	270	300	330						
0	2079	2079	2079	2079	2079	2079	2079	2079	2079	2079	2079	2079						
5	2059	2069	2081	2090	2092	2086	2077	2067	2058	2049	2047	2051						
10	1993	2013	2029	2043	2044	2035	2013	1985	1973	1966	1963	1974						
15	1770	1813	1824	1843	1829	1817	1789	1739	1731	1724	1726	1743						
20	1414	1456	1472	1493	1460	1456	1415	1364	1357	1361	1376	1392						
25	1018	1041	1058	1064	1032	1029	998	951	951	959	989	994						
30	656	675	676	679	645	647	625	603	613	611	638	644						
35	360	380	374	372	347	347	330	316	327	318	339	349						
40	154	163	156	158	142	139	131	124	131	127	137	149						
45	31.2	35.4	32.9	32.0	30.1	28.8	25.9	27.7	29.3	27.7	26.9	30.8						
50	13.8	14.8	14.9	14.8	15.4	15.0	14.1	14.1	13.6	12.5	12.6	13.4						
55	10.7	11.3	11.5	11.5	11.7	11.4	10.8	10.5	10.2	9.51	9.81	10.3						
60	5.48	5.93	6.14	6.13	6.03	5.89	5.40	5.11	5.06	4.71	4.83	5.16						
65	1.68	1.94	2.02	1.77	1.82	1.69	1.58	1.52	1.50	1.29	1.32	1.39						
70	0.73	0.89	0.93	0.67	0.78	0.77	0.77	0.76	0.74	0.62	0.55	0.57						
75	0.14	0.24	0.18	0.19	0.15	0.12	0.10	0.10	0.10	0.10	0.09	0.11						
80	0.05	0.04	0.04	0.04	0.04	0.03	0.04	0.03	0.03	0.04	0.03	0.04						
85	0.04	0.03	0.03	0.03	0.03	0.03	0.04	0.02	0.03	0.04	0.03	0.03						
90	0.00	0.00	0.00	0.00	0.00	0.00	0.00	0.00	0.00	0.00	0.00	0.00						
95	0.00	0.00	0.00	0.00	0.00	0.00	0.00	0.00	0.00	0.00	0.00	0.00						
100	0.00	0.00	0.00	0.00	0.00	0.00	0.00	0.00	0.00	0.00	0.00	0.00						
105	0.00	0.00	0.00	0.00	0.00	0.00	0.00	0.00	0.00	0.00	0.00	0.00						
110	0.00	0.00	0.00	0.00	0.00	0.00	0.00	0.00	0.00	0.00	0.00	0.00						
115	0.00	0.00	0.00	0.00	0.00	0.00	0.00	0.00	0.00	0.00	0.00	0.00						
120	0.00	0.00	0.00	0.00	0.00	0.00	0.00	0.00	0.00	0.00	0.00	0.00						
125	0.00	0.00	0.00	0.00	0.00	0.00	0.00	0.00	0.00	0.00	0.00	0.00						
130	0.00	0.00	0.00	0.00	0.00	0.00	0.00	0.00	0.00	0.00	0.00	0.00						
135	0.00	0.00	0.00	0.00	0.00	0.00	0.00	0.00	0.00	0.00	0.00	0.00						
140	0.00	0.00	0.00	0.00	0.00	0.00	0.00	0.00	0.00	0.00	0.00	0.00						
145	0.00	0.00	0.00	0.00	0.00	0.00	0.00	0.00	0.00	0.00	0.00	0.00						
150	0.00	0.00	0.00	0.00	0.00	0.00	0.00	0.00	0.00	0.00	0.00	0.00						
155	0.00	0.00	0.00	0.00	0.00	0.00	0.00	0.00	0.00	0.00	0.00	0.00						
160	0.00	0.00	0.00	0.00	0.00	0.00	0.00	0.00	0.00	0.00	0.00	0.00						
165	0.00	0.00	0.00	0.00	0.00	0.00	0.00	0.00	0.00	0.00	0.00	0.00						
170	0.00	0.00	0.00	0.00	0.00	0.00	0.00	0.00	0.00	0.00	0.00	0.00						
175	0.00	0.00	0.00	0.00	0.00	0.00	0.00	0.00	0.00	0.00	0.00	0.00						
180	0.00	0.00	0.00	0.00	0.00	0.00	0.00	0.00	0.00	0.00	0.00	0.00						

C Range: 0 - 360DEG
C Interval: 30.0DEG
Test Speed: HIGH
Temperature:25.3℃
Operators:zoe
Test Date:2025-1-9

Range: 0 - 180DEG
Interval: 1.0DEG
Test System:EVERFINE GO-SPEX500_V1 SYSTEM V2.00.461
Humidity:65.0%
Test Distance:3.160m [K=1.0000]
Remarks: LAMP:BXRE-30H1000-A-83 Ra:95
LENS:PM-0132C 50R
NOT DRIVER:48V
30minutes warm-up